

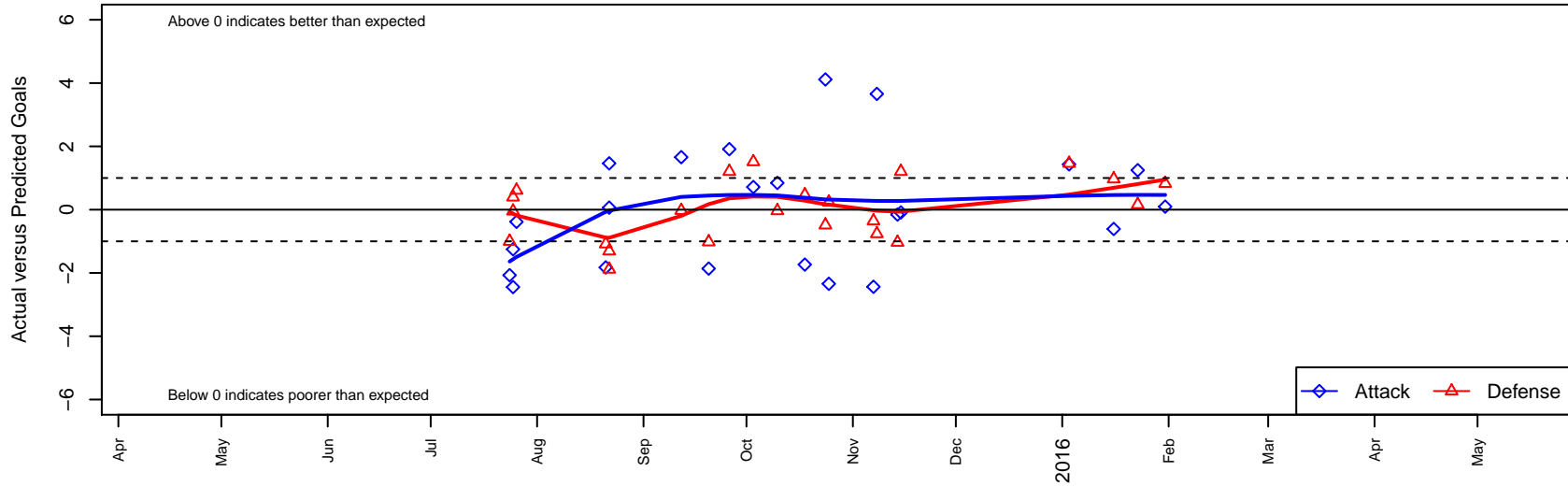
Seattle United S Black G02

Seattle United Regional
 Seattle, WA
 G02 total strength=813
 attack=1.39 defense=0.79
 fall league = NPSL Div 3 U13

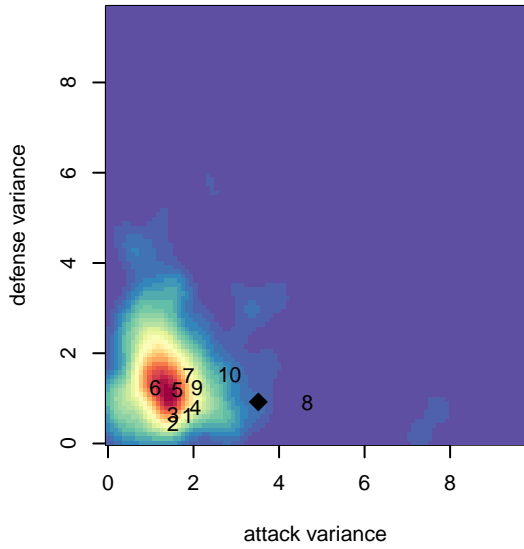
alt names used:
 Seattle United South G02 Black
 Seattle United South G02 Black
 SU South Black
 Seattle United South G02 Black

Venues played:
 2015 Crossfire Select GU13 Silver
 2015 Xtreme Cup GU13
 2015 NPSL Division 3 U13
 2015 Founders Cup G02

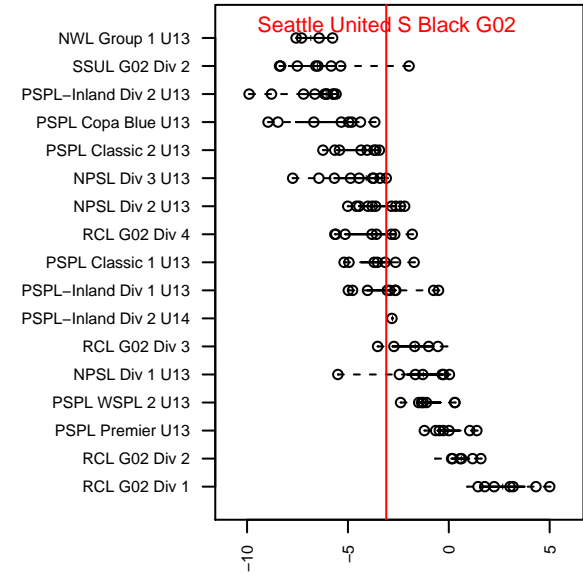
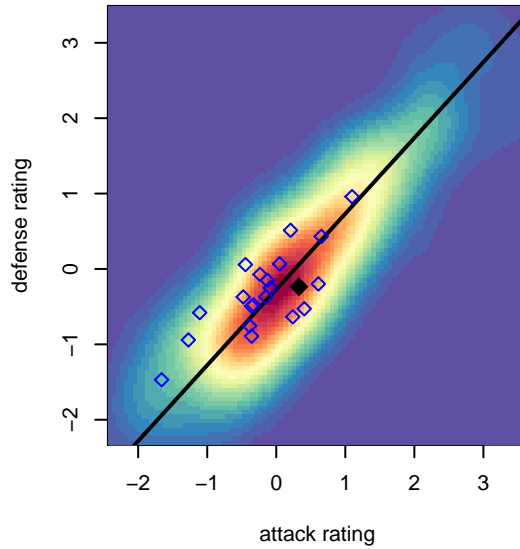
Seattle United S Black G02
 Dots are actual minus expected GF (blue circles) and GA (red triangles).
 Blue line is smoothed change in attack strength. Red is smoothed change in defense strength.



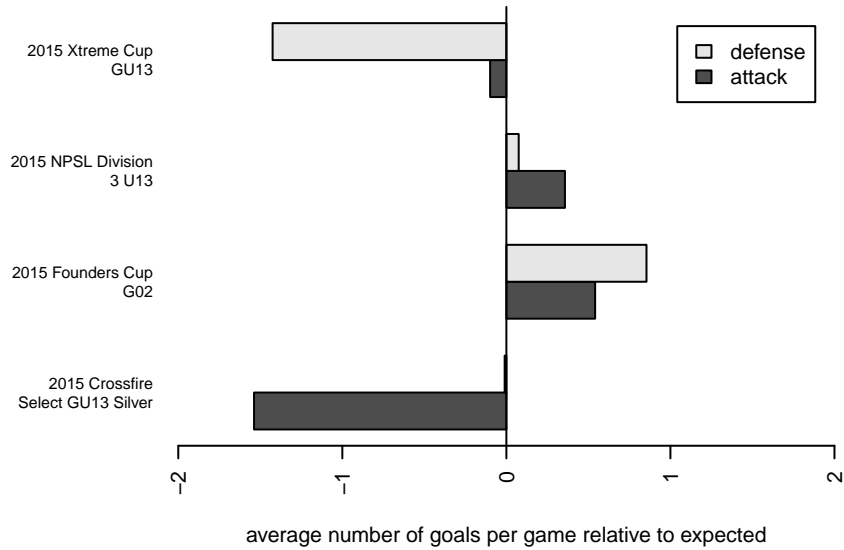
**attack and defense variance (black dot)
relative to other teams
and top 10 in region**



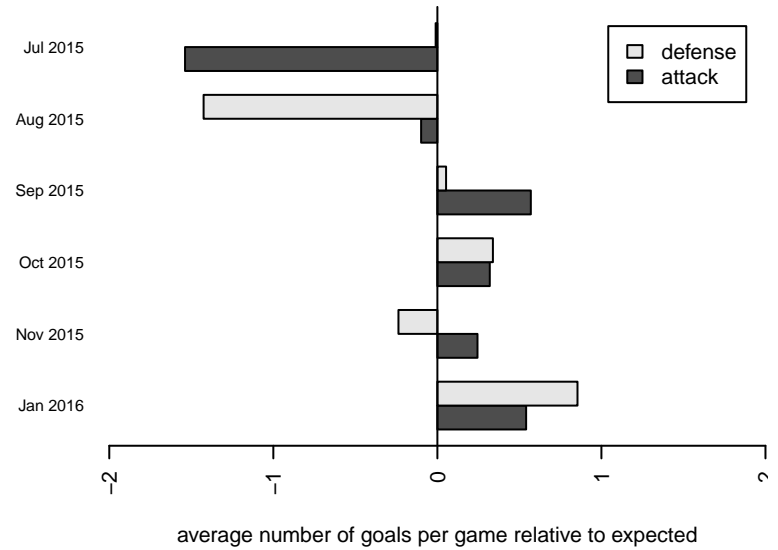
**attack and defense rating
relative to others at age
and all opponents in last 13 months**



Performance relative to 13 month average



Performance relative to 13 month average



date	home		away		venue	pred.home	pred.away
2016-01-31	Crossfire Select Miller G02	2	Seattle United S Black G02	1	2015 Founders Cup G02	2.83	0.90
2016-01-23	Washington Timbers Burgundy G02	1	Seattle United S Black G02	3	2015 Founders Cup G02	1.16	1.75
2016-01-16	Seattle United S Black G02	0	Kent United Green G02	3	2015 Founders Cup G02	0.61	3.97
2016-01-03	Seattle United S Black G02	3	MIFC Fusion G02	1	2015 Founders Cup G02	1.57	2.46
2015-11-15	Blackhills FC Red G02	1	Seattle United S Black G02	2	2015 NPSL Division 3 U13	2.21	2.09
2015-11-14	Seattle United S Black G02	2	Seattle United NE Blue G02	2	2015 NPSL Division 3 U13	2.15	0.96
2015-11-08	MIFC Wildcats G02	1	Seattle United S Black G02	9	2015 NPSL Division 3 U13	0.24	5.34
2015-11-07	Snohomish United Red G02	1	Seattle United S Black G02	0	2015 NPSL Division 3 U13	0.64	2.44
2015-10-25	Seattle United S Black G02	3	MIFC Wildcats G02	0	2015 NPSL Division 3 U13	5.34	0.24
2015-10-24	Seattle United S Black G02	6	Seattle United S White G02	2	2015 NPSL Division 3 U13	1.89	1.51
2015-10-18	Seattle United W Blue G02	0	Seattle United S Black G02	1	2015 NPSL Division 3 U13	0.47	2.74
2015-10-10	Seattle United NE Blue G02	1	Seattle United S Black G02	3	2015 NPSL Division 3 U13	0.96	2.15
2015-10-03	Seattle United S Black G02	2	WA Rush Nero G02	0	2015 NPSL Division 3 U13	1.28	1.51
2015-09-26	Seattle United S Black G02	4	Blackhills FC Red G02	1	2015 NPSL Division 3 U13	2.09	2.21
2015-09-20	Southlake Select Red Tigers G02	2	Seattle United S Black G02	1	2015 NPSL Division 3 U13	0.98	2.86
2015-09-12	BIFC Blue G02	1	Seattle United S Black G02	3	2015 NPSL Division 3 U13	0.97	1.34
2015-08-22	Seattle United S Black G02	3	SGESC Fusion Red G02	3	2015 Xtreme Cup GU13	1.54	1.12
2015-08-22	Seattle United S Black G02	1	NSC Thunder G02	3	2015 Xtreme Cup GU13	0.94	1.69
2015-08-21	Seattle Celtic White G02	2	Seattle United S Black G02	0	2015 Xtreme Cup GU13	0.92	1.82
2015-07-26	Seattle United S Black G02	2	Kent United White G02	1	2015 Crossfire Select GU13 Silver	2.38	1.61
2015-07-25	Newport FC Fusion G02	1	Seattle United S Black G02	1	2015 Crossfire Select GU13 Silver	0.95	3.45
2015-07-25	NK Fury G02	1	Seattle United S Black G02	0	2015 Crossfire Select GU13 Silver	1.40	1.25
2015-07-24	Seattle United S Black G02	0	Crossfire Select McCool G02	2	2015 Crossfire Select GU13 Silver	2.07	1.00